

**American Radio Supply**  
AmericanRadioSupply.com

REVISIONS

ZONE	REV	DESCRIPTION	DATE	APPROVED

Technical drawing of a contact assembly. Dimensions include 14±0.1, 12±0.2, 1.5, 15±0.2, 19±0.2, 29.1±0.1, and 22.2±0.2. A diameter of 03.2 is also shown. Below are six contact diagrams labeled 3S 180°, 5S 180°, 5S2 240°, 6S 240°, 7S 270°, and 8S 270° with their respective contact angles.

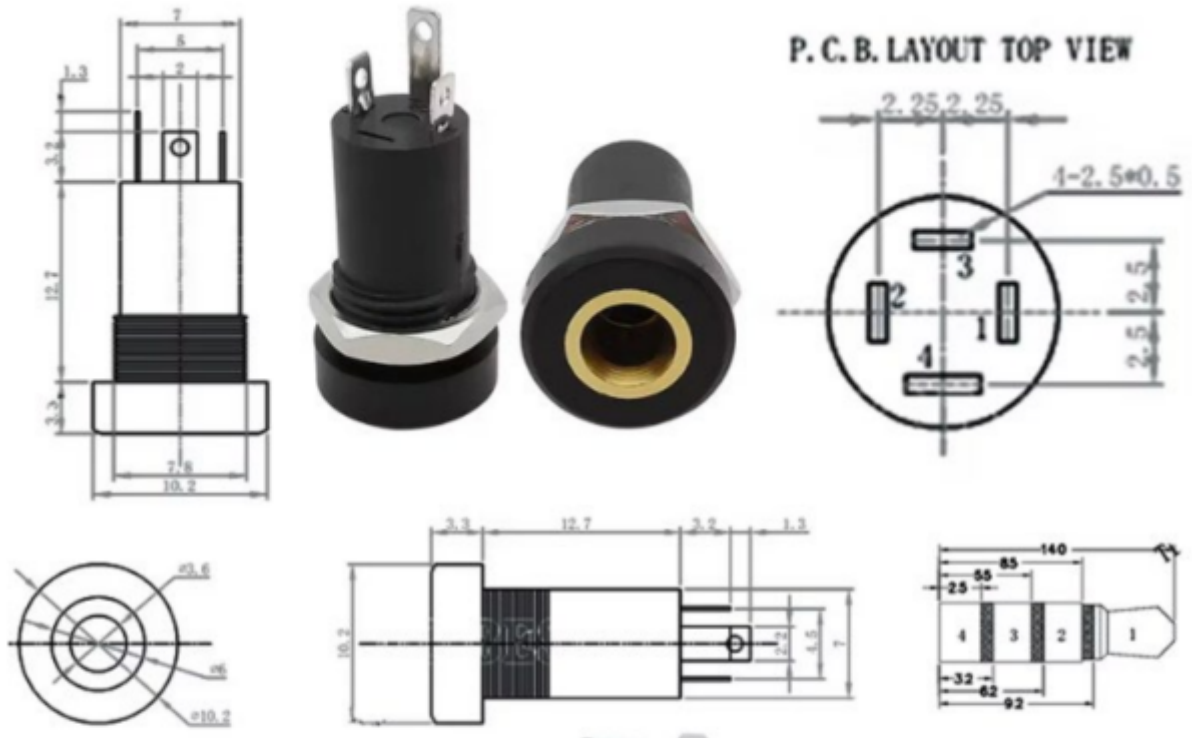
(X) : DENOTES NUMBER OF CONTACT POSITION

**SPECIFICATIONS :**

- CONTACT RESISTANCE : 20m OHM MAX.
- INSULATION RESISTANCE : 300m OHM MIN. AT DC 500V. -
- VOLTAGE WITHSTANDING : AC 1000V FOR ONE MIN.
- INSERTION FORCE : 4.0KG MAX.
- WITHDRAWAL FORCE : 1-3.5KG.

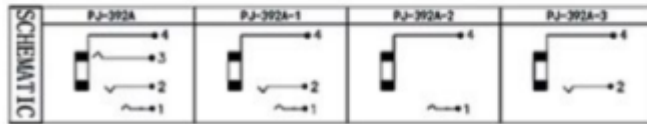
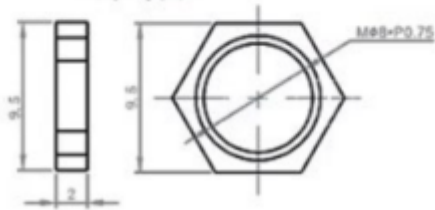
BY	DATE	<b>PAN PACIFIC ENTERPRISES CO.,INC</b>
DRAWN F.N	01/16/02	
CHK'D T.C.	01/22/02	PART NO
APPRV		<b>DIN-54000-(X)S</b>
MATERIAL	SEE NOTES	UNITS
FINISH	SEE NOTES	mm
		SCALE
		NONE

SHEET 1 OF 1

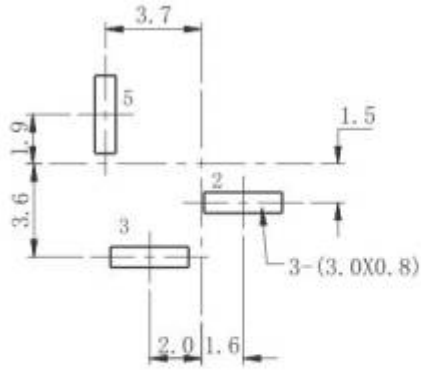


# PJ392A

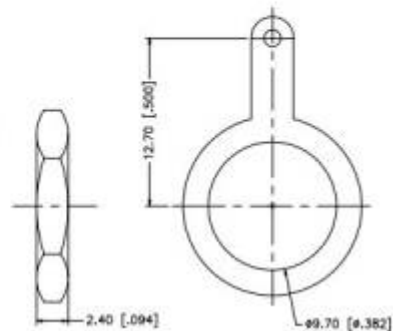
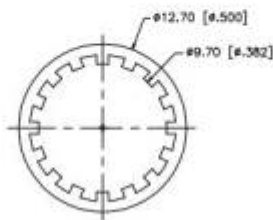
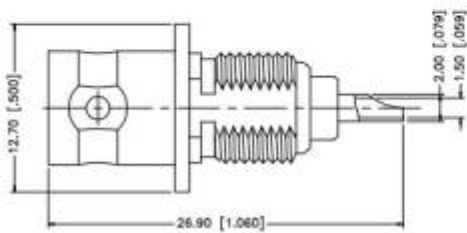
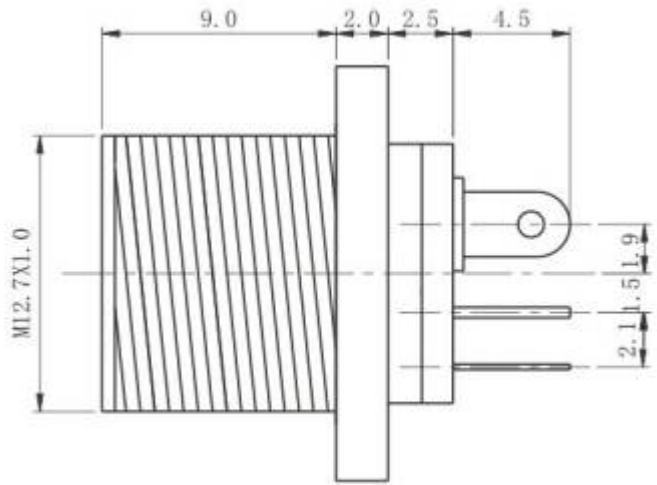
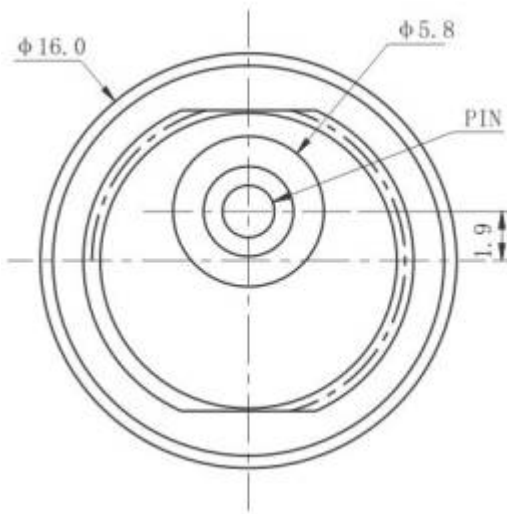
螺帽







PIN	φ2.0	φ2.5
APPD		



From: <https://kornequipped.com/mywiki/> - KornEquipped

Permanent link: [https://kornequipped.com/mywiki/doku.php?id=tayda\\_pinouts](https://kornequipped.com/mywiki/doku.php?id=tayda_pinouts)

Last update: **2026/05/22 19:18**

